

CONTEXT

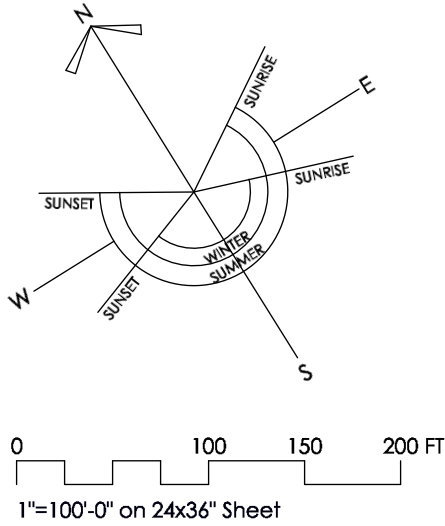
Stockton Borough Park

Stockton Borough, Hunterdon County, New Jersey

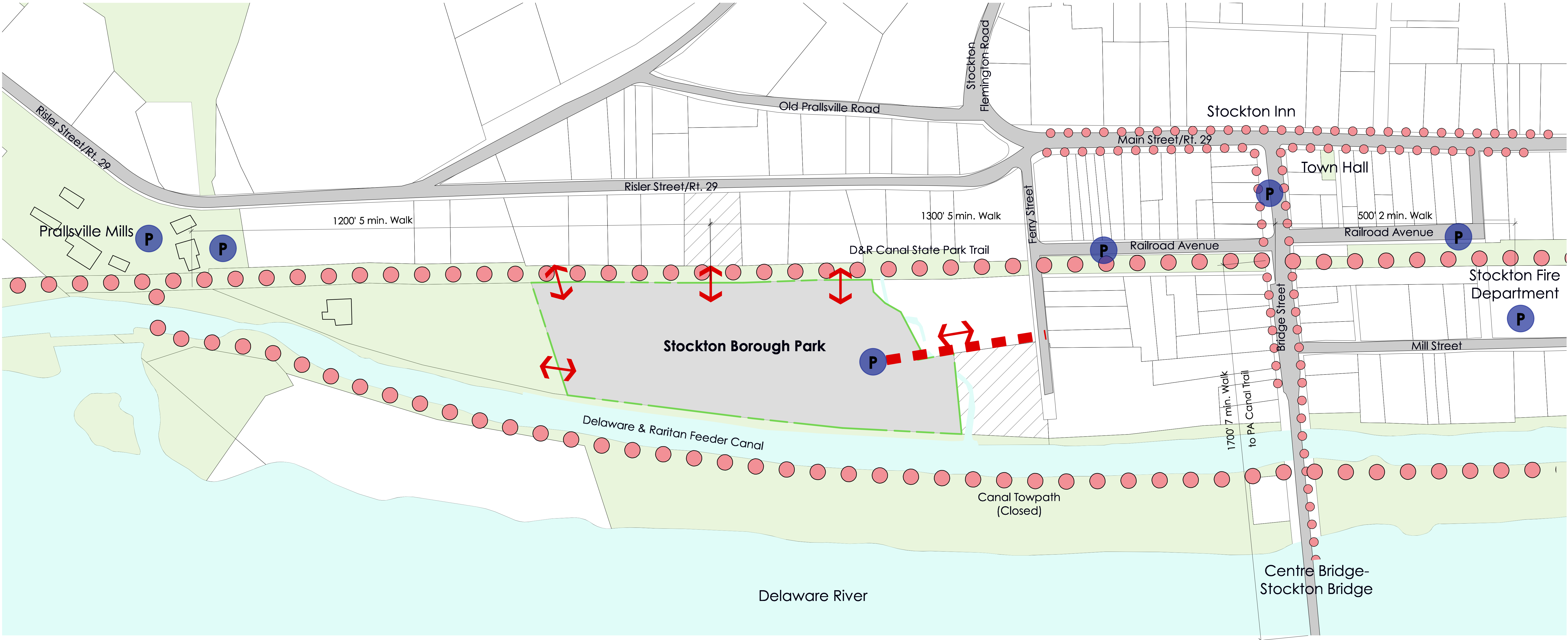
Date: January 2020

PREPARED FOR
Borough of Stockton
2 South Main Street
Stockton NJ 08559

PREPARED BY
John Morgan Thomas Landscape
Architects, P.C.
4 South Union Street, Suite 300,
Lambertville, NJ 08530
609.397.9070
www.johnmorganthomas.com



- | | | | |
|--|-------------------------------|--|-------------------------------|
| | Park Pedestrian Access | | Public Land/Open Space |
| | Park Vehicular Access | | Adjacent Vacant Parcel |
| | Trail | | Water |
| | Sidewalk | | Public Parking |



SITE ANALYSIS

Stockton Borough Park

Stockton Borough, Hunterdon County, New Jersey

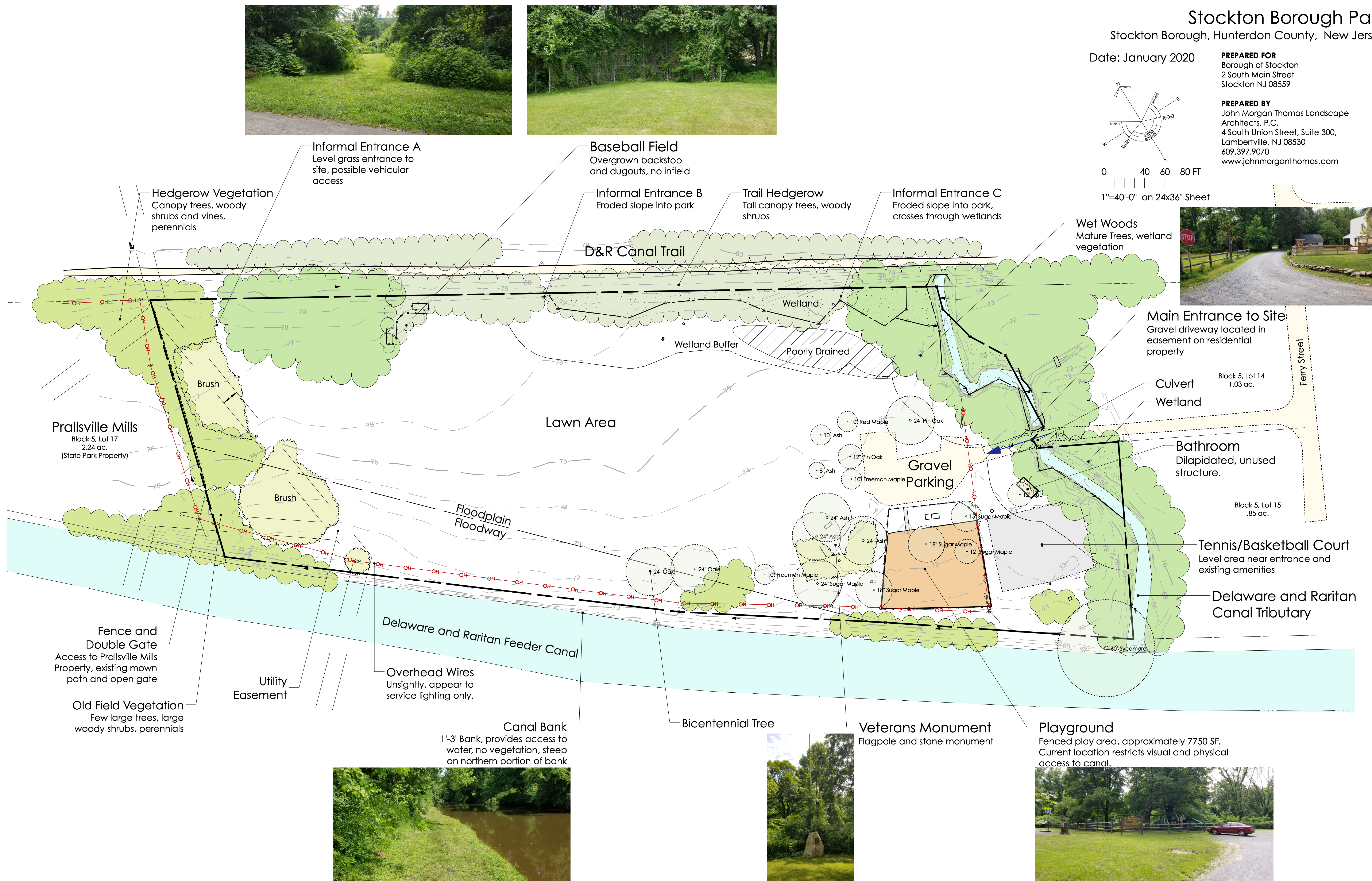
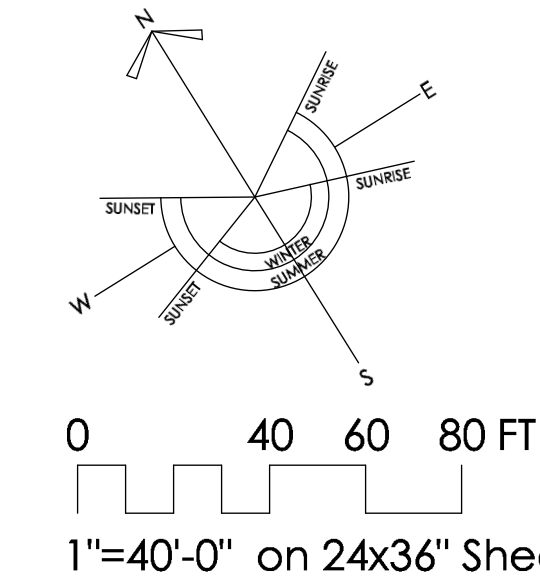
Date: January 2020

PREPARED FOR

Borough of Stockton
2 South Main Street
Stockton NJ 08559

PREPARED BY

John Morgan Thomas Landscape
Architects, P.C.
4 South Union Street, Suite 300,
Lambertville, NJ 08530
609.397.9070
www.johnmorganthomas.com



PARK MASTER PLAN

Stockton Borough Park

Stockton Borough, Hunterdon County, New Jersey

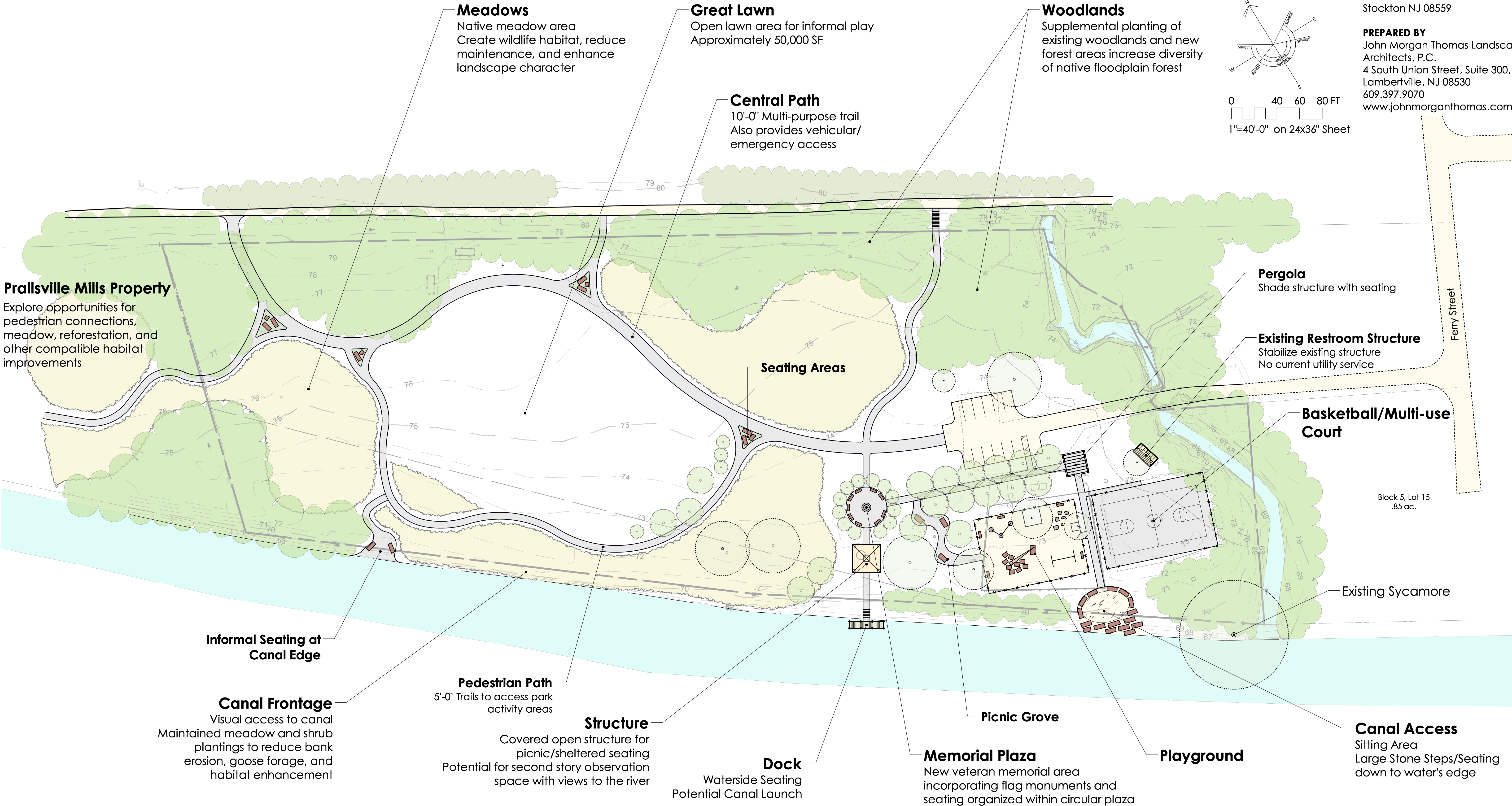
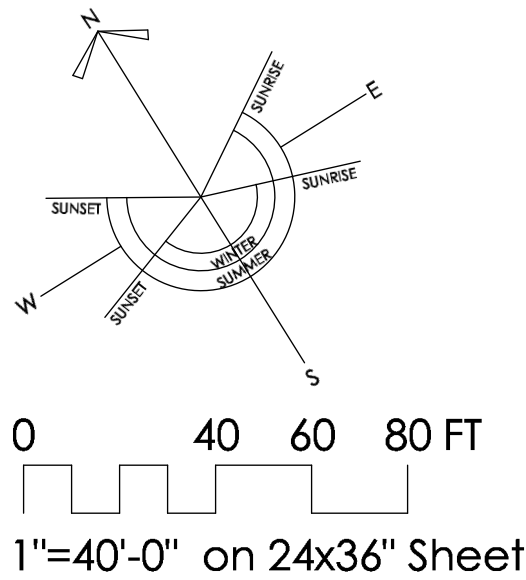
Date: January 2020

PREPARED FOR

Borough of Stockton
2 South Main Street
Stockton NJ 08559

PREPARED BY

John Morgan Thomas Landscape
Architects, P.C.
4 South Union Street, Suite 300,
Lambertville, NJ 08530
609.397.9070
www.johnmorganthomas.com





PRECEDENT PHOTOS

Stockton Borough Park

Stockton Borough, Hunterdon County, New Jersey

Date: January 2020

PREPARED FOR

Borough of Stockton
2 South Main Street
Stockton NJ 08559

PREPARED BY

John Morgan Thomas Landscape
Architects, P.C.
4 South Union Street, Suite 300,
Lambertville, NJ 08530
609.397.9070
www.johnmorganthomas.com

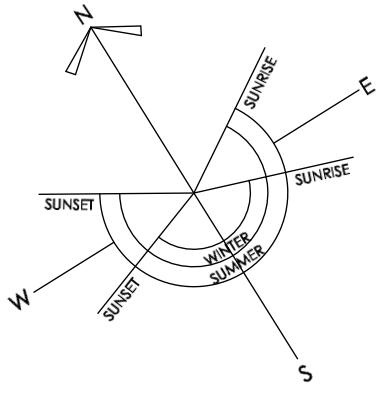


Figure 1. Raven Rock Quarry on May 19, 1932 as an active site (photo from NJGWS Archives).

