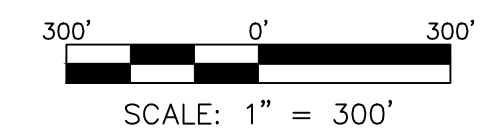


- NOTES**
1. THE AREAS, BOUNDARIES AND DIMENSIONS, SHOWN ON THIS TAX MAP, ARE DERIVED FROM THE FORMER TAX MAPS, GROUND SURVEYS, AERIAL SURVEYS, AND RECORDED PLANS, MAPS, DEEDS, WILLS, AND ARE TO BE USED FOR ASSESSMENT PURPOSES ONLY.
 2. THIS TAX MAP SUPERSEDES THE TAX MAP APPROVED DEC 1, 2005, SERIAL NUMBER 870.
 3. THIS SHEET HAS BEEN REDRAWN USING COMPUTER AIDED DRAFTING/DESIGN (CAD/D) BASED ON THE MAP ORIGINALLY PREPARED BY FRANK W BOHREN, C.E. DATED JUNE, 1962.

- LEGEND**
- 5 BLOCK NUMBER
 - 5 DETAIL SHEET NUMBER
 - 5 LOT NUMBER
 - MUNICIPAL BOUNDARY LINE
 - STATE LINE
 - SHEET MATCH LINE
 - STREAM OR RIVER
 - LOT LINE/WATER BOUNDARY
 - (S) SCALED DIMENSION WHERE INDICATED
 - (E) DIM. TO ROAD CENTER LINE WHERE INDICATED
 - P PROPERTY LINE WHERE INDICATED



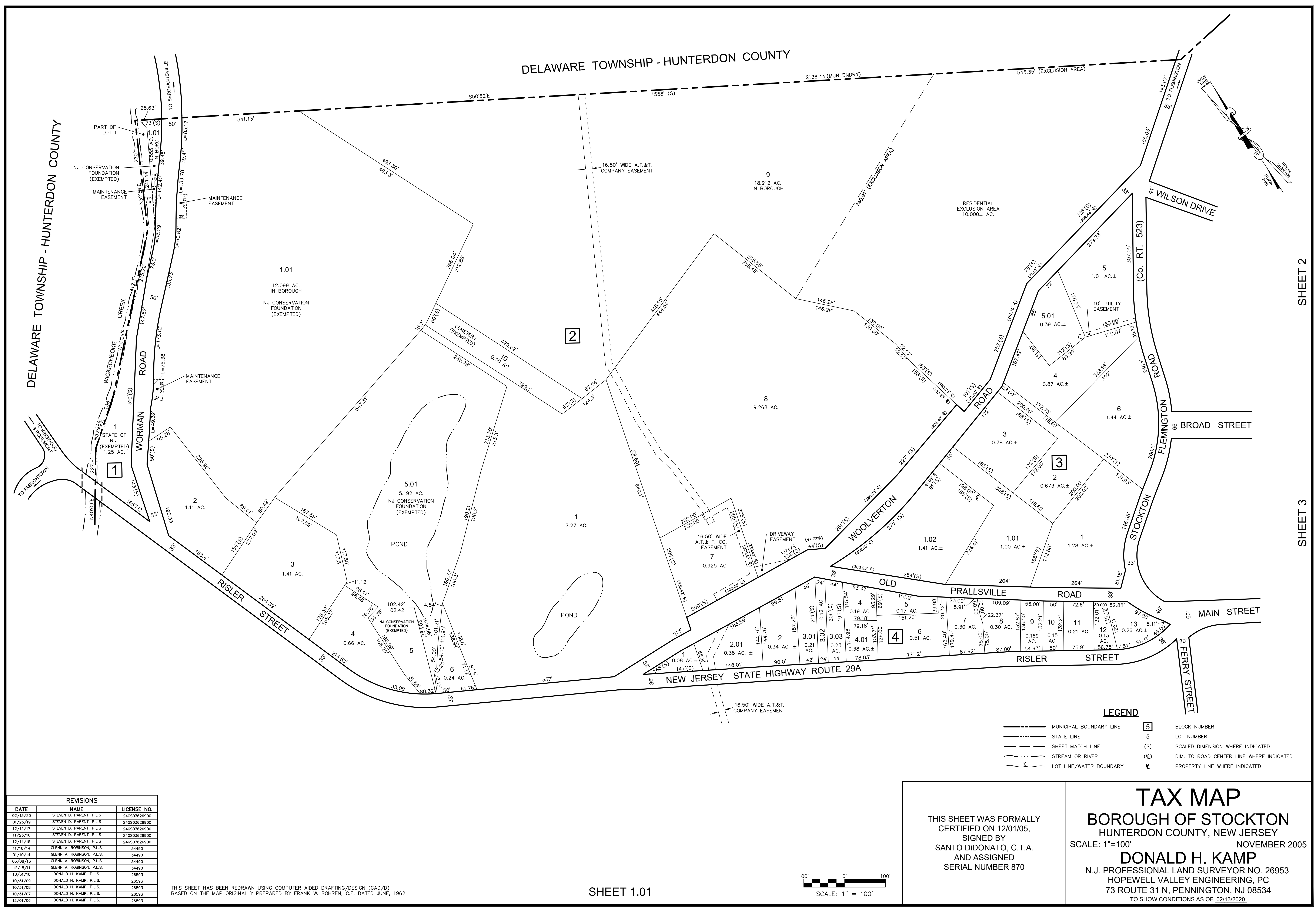
REVISIONS		
DATE	NAME	LICENSE NO.
02/13/20	STEVEN D. PARENT, P.L.S.	246503626900
01/25/19	STEVEN D. PARENT, P.L.S.	246503626900
12/12/17	STEVEN D. PARENT, P.L.S.	246503626900
11/23/16	STEVEN D. PARENT, P.L.S.	246503626900
12/14/15	STEVEN D. PARENT, P.L.S.	246503626900
11/18/14	GLENN A. ROBINSON, P.L.S.	34490
07/10/14	GLENN A. ROBINSON, P.L.S.	34490
03/08/13	GLENN A. ROBINSON, P.L.S.	34490
12/15/11	GLENN A. ROBINSON, P.L.S.	34490
10/31/10	DONALD H. KAMP, P.L.S.	26593
10/31/09	DONALD H. KAMP, P.L.S.	26593
10/31/08	DONALD H. KAMP, P.L.S.	26593
10/31/07	DONALD H. KAMP, P.L.S.	26593
12/01/06	DONALD H. KAMP, P.L.S.	26593

I HEREBY CERTIFY THAT THIS MAP HAS BEEN REVISED UNDER MY IMMEDIATE SUPERVISION, AND COMPLIES WITH THE LAWS OF THE STATE OF NEW JERSEY.

[Signature]
 STEVEN D. PARENT
 N.J. PROFESSIONAL LAND SURVEYOR NO. 246503626900

THIS SHEET WAS FORMALLY CERTIFIED ON 12/01/05, SIGNED BY SANTO DIDONATO, C.T.A. AND ASSIGNED SERIAL NUMBER 870

TAX MAP
 BOROUGH OF STOCKTON
 HUNTERDON COUNTY, NEW JERSEY
 SCALE: 1"=100' NOVEMBER 2005
DONALD H. KAMP
 N.J. PROFESSIONAL LAND SURVEYOR NO. 26953
 HOPEWELL VALLEY ENGINEERING, PC
 73 ROUTE 31 N, PENNINGTON, NJ 08534
 TO SHOW CONDITIONS AS OF 02/13/2020



DELAWARE TOWNSHIP - HUNTERDON COUNTY

SHEET 2

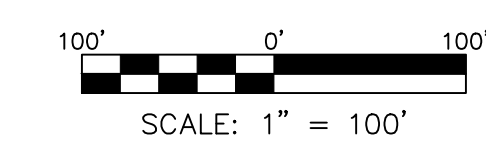
SHEET 3

DELAWARE TOWNSHIP - HUNTERDON COUNTY

REVISIONS		
DATE	NAME	LICENSE NO.
02/13/20	STEVEN D. PARENT, P.L.S.	240503626900
01/25/19	STEVEN D. PARENT, P.L.S.	240503626900
12/12/17	STEVEN D. PARENT, P.L.S.	240503626900
11/23/16	STEVEN D. PARENT, P.L.S.	240503626900
12/14/15	STEVEN D. PARENT, P.L.S.	240503626900
11/18/14	GLENN A. ROBINSON, P.L.S.	34490
07/10/14	GLENN A. ROBINSON, P.L.S.	34490
03/28/13	GLENN A. ROBINSON, P.L.S.	34490
12/15/11	GLENN A. ROBINSON, P.L.S.	34490
10/31/10	DONALD H. KAMP, P.L.S.	26593
10/31/09	DONALD H. KAMP, P.L.S.	26593
10/31/08	DONALD H. KAMP, P.L.S.	26593
10/31/07	DONALD H. KAMP, P.L.S.	26593
12/01/06	DONALD H. KAMP, P.L.S.	26593

THIS SHEET HAS BEEN REDRAWN USING COMPUTER AIDED DRAFTING/DESIGN (CAD/D) BASED ON THE MAP ORIGINALLY PREPARED BY FRANK W. BOHREN, C.E. DATED JUNE, 1962.

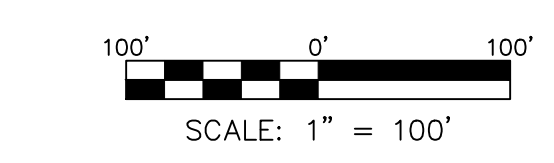
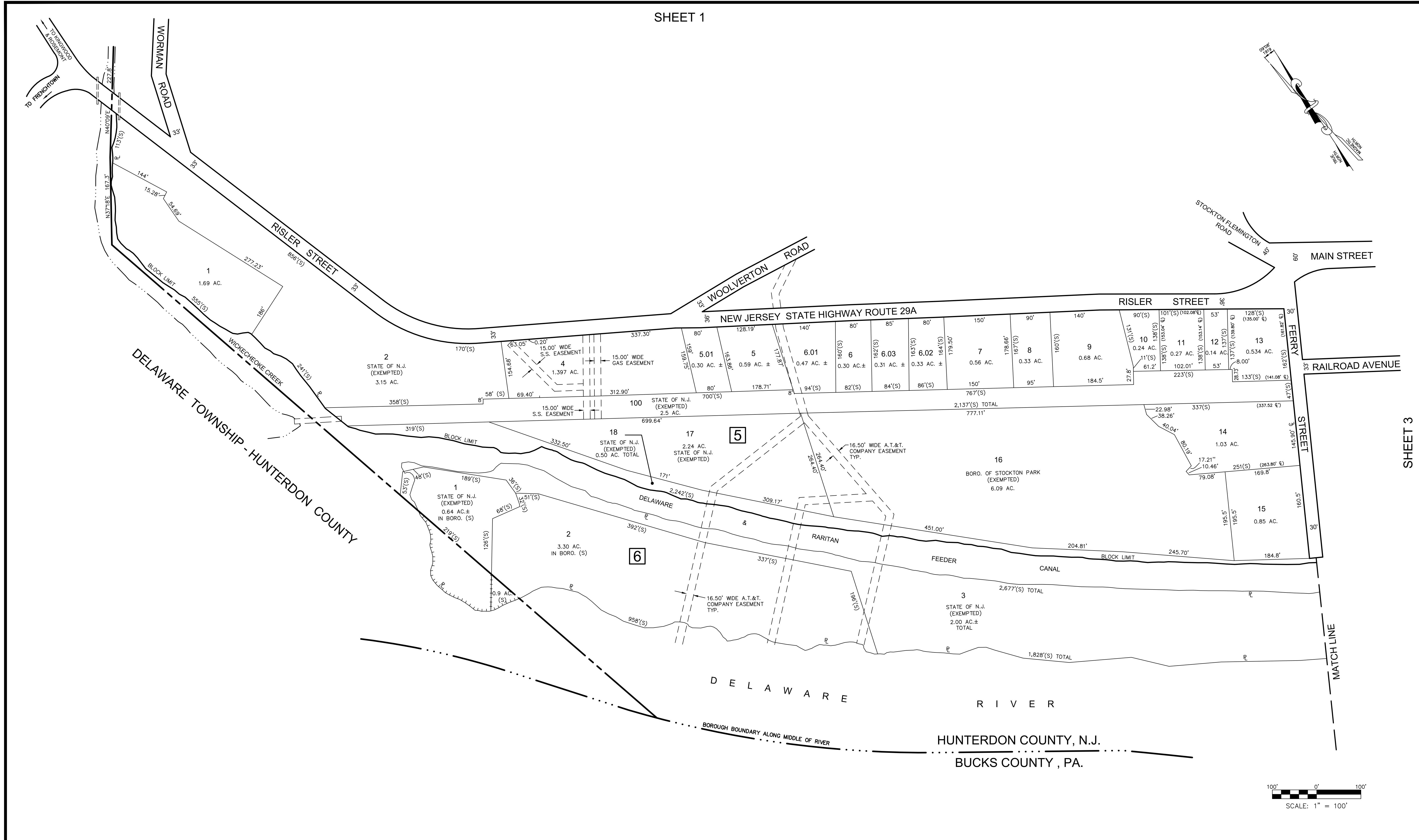
SHEET 1.01



LEGEND	
	MUNICIPAL BOUNDARY LINE
	STATE LINE
	SHEET MATCH LINE
	STREAM OR RIVER
	LOT LINE/WATER BOUNDARY
	BLOCK NUMBER
(5)	LOT DIMENSION WHERE INDICATED
(L)	SCALED DIMENSION WHERE INDICATED
(R)	DIM. TO ROAD CENTER LINE WHERE INDICATED
(P)	PROPERTY LINE WHERE INDICATED

THIS SHEET WAS FORMALLY CERTIFIED ON 12/01/05, SIGNED BY SANTO DIDONATO, C.T.A. AND ASSIGNED SERIAL NUMBER 870

TAX MAP
BOROUGH OF STOCKTON
 HUNTERDON COUNTY, NEW JERSEY
 SCALE: 1"=100'
 NOVEMBER 2005
DONALD H. KAMP
 N.J. PROFESSIONAL LAND SURVEYOR NO. 26953
 HOPEWELL VALLEY ENGINEERING, PC
 73 ROUTE 31 N, PENNINGTON, NJ 08534
 TO SHOW CONDITIONS AS OF 02/13/2020



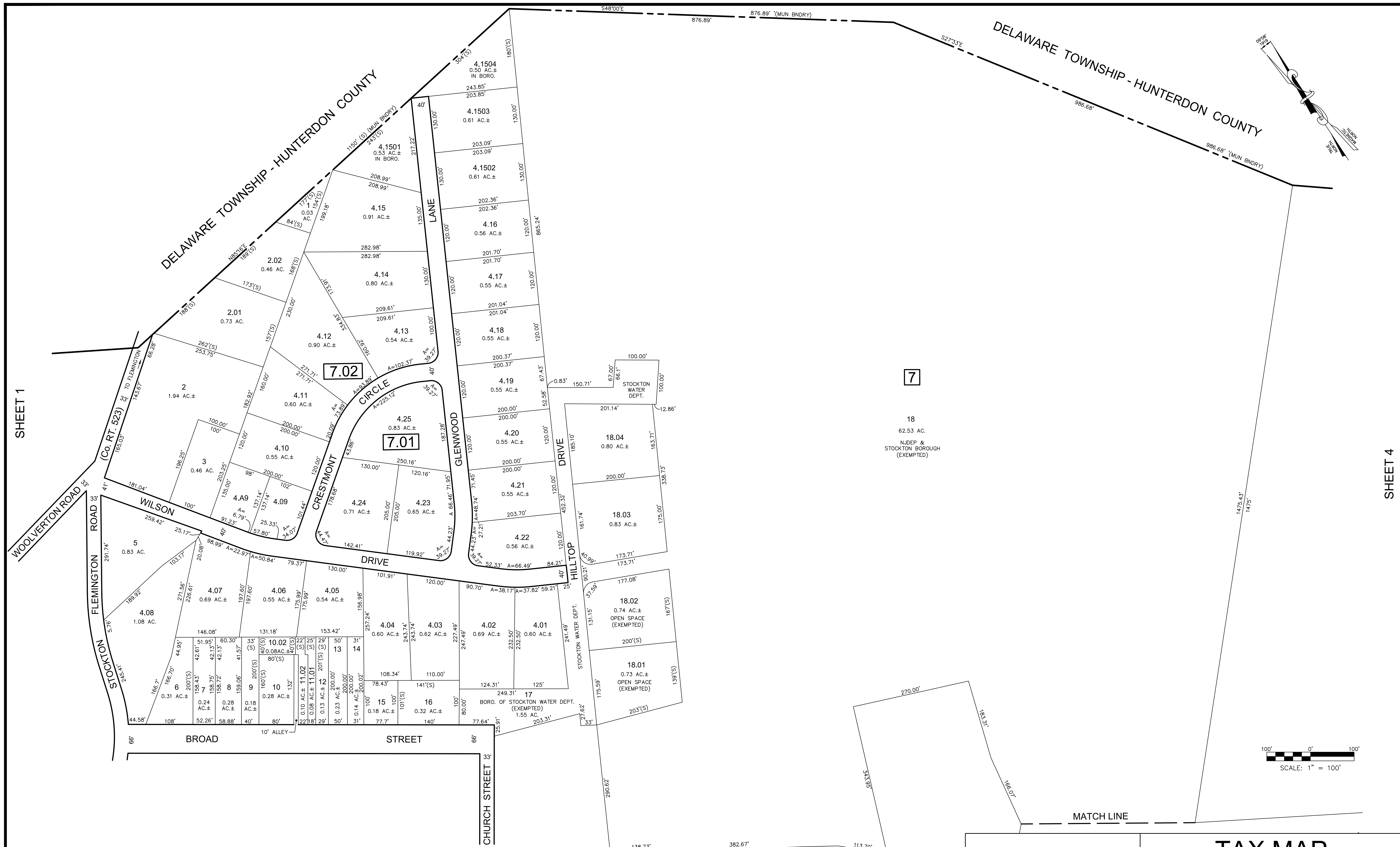
REVISIONS		
DATE	NAME	LICENSE NO.
02/13/20	STEVEN D. PARENT, P.L.S.	240503626900
01/25/19	STEVEN D. PARENT, P.L.S.	240503626900
12/12/17	STEVEN D. PARENT, P.L.S.	240503626900
11/23/16	STEVEN D. PARENT, P.L.S.	240503626900
12/14/15	STEVEN D. PARENT, P.L.S.	240503626900
11/18/14	GLENN A. ROBINSON, P.L.S.	34490
07/10/14	GLENN A. ROBINSON, P.L.S.	34490
03/08/13	GLENN A. ROBINSON, P.L.S.	34490
12/15/11	GLENN A. ROBINSON, P.L.S.	34490
10/31/10	DONALD H. KAMP, P.L.S.	26593
10/31/09	DONALD H. KAMP, P.L.S.	26593
10/31/08	DONALD H. KAMP, P.L.S.	26593
10/31/07	DONALD H. KAMP, P.L.S.	26593
12/01/05	DONALD H. KAMP, P.L.S.	26593

THIS SHEET HAS BEEN REDRAWN USING COMPUTER AIDED DRAFTING/DESIGN (CAD/D) BASED ON THE MAP ORIGINALLY PREPARED BY FRANK W. BOHREN, C.E. DATED JUNE, 1962.

LEGEND	
	MUNICIPAL BOUNDARY LINE
	STATE LINE
	SHEET MATCH LINE
	STREAM OR RIVER
	LOT LINE/WATER BOUNDARY
	BLOCK NUMBER
	LOT NUMBER
	SCALED DIMENSION WHERE INDICATED
	DIM. TO ROAD CENTER LINE WHERE INDICATED
	PROPERTY LINE WHERE INDICATED

THIS SHEET WAS FORMALLY CERTIFIED ON 12/01/05, SIGNED BY SANTO DIDONATO, C.T.A. AND ASSIGNED SERIAL NUMBER 870

TAX MAP
BOROUGH OF STOCKTON
 HUNTERDON COUNTY, NEW JERSEY
 SCALE: 1"=100' NOVEMBER 2005
DONALD H. KAMP
 N.J. PROFESSIONAL LAND SURVEYOR NO. 26953
 HOPEWELL VALLEY ENGINEERING, PC
 73 ROUTE 31 N, PENNINGTON, NJ 08534
 TO SHOW CONDITIONS AS OF 02/13/2020



SHEET 1

SHEET 4

REVISIONS		
DATE	NAME	LICENSE NO.
02/13/20	STEVEN D. PARENT, P.L.S.	242030326900
01/25/19	STEVEN D. PARENT, P.L.S.	242030326900
12/12/17	STEVEN D. PARENT, P.L.S.	242030326900
11/23/16	STEVEN D. PARENT, P.L.S.	242030326900
12/14/15	STEVEN D. PARENT, P.L.S.	242030326900
11/18/14	GLENN A. ROBINSON, P.L.S.	34490
07/10/14	GLENN A. ROBINSON, P.L.S.	34490
03/28/13	GLENN A. ROBINSON, P.L.S.	34490
12/15/11	GLENN A. ROBINSON, P.L.S.	34490
10/31/10	DONALD H. KAMP, P.L.S.	26593
10/31/09	DONALD H. KAMP, P.L.S.	26593
10/31/08	DONALD H. KAMP, P.L.S.	26593
10/31/07	DONALD H. KAMP, P.L.S.	26593
12/01/05	DONALD H. KAMP, P.L.S.	26593

THIS SHEET HAS BEEN REDRAWN USING COMPUTER AIDED DRAFTING/DESIGN (CAD/D) BASED ON THE MAP ORIGINALLY PREPARED BY FRANK W. BOHREN, C.E. DATED JUNE, 1962.

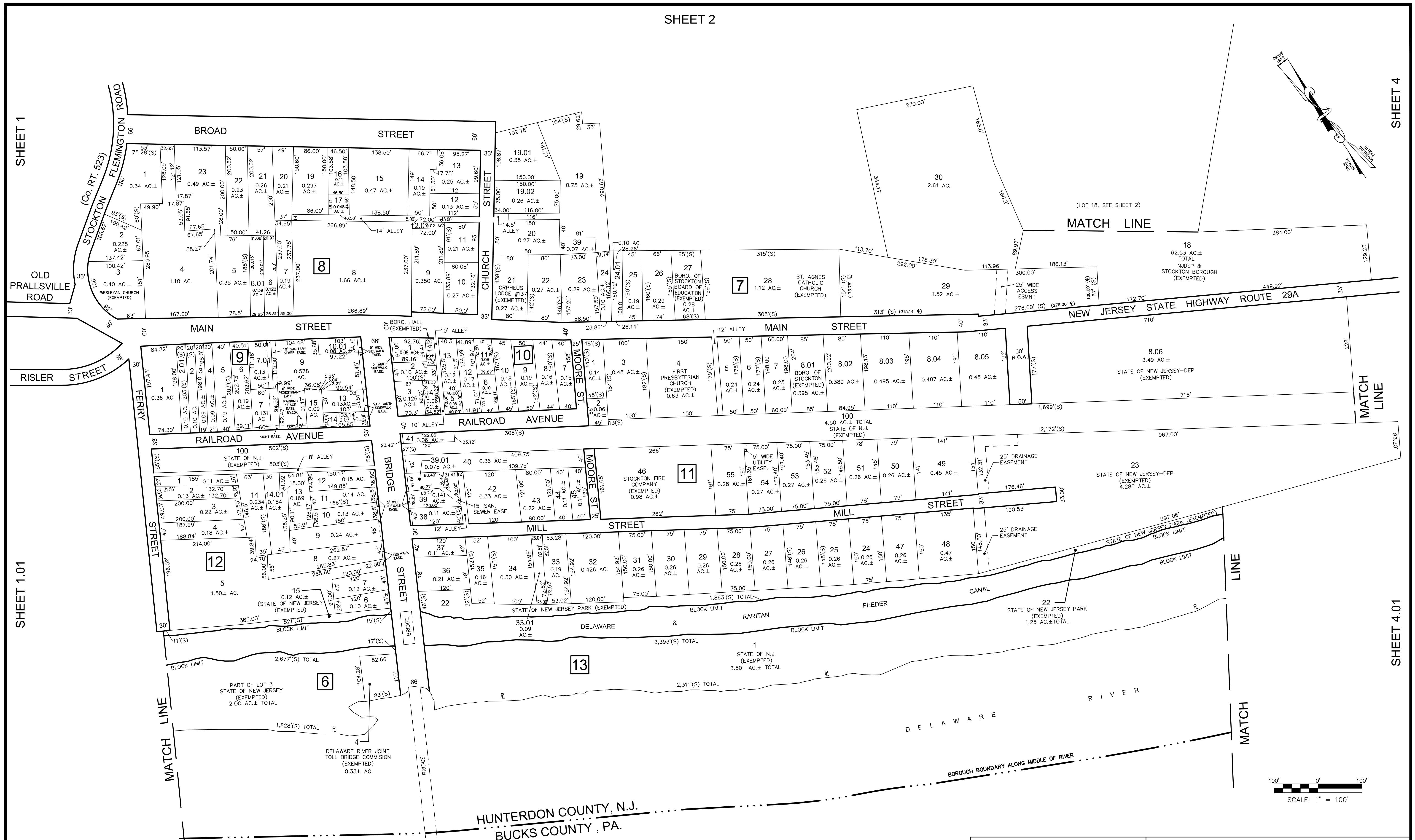
SHEET 3

LEGEND	
	MUNICIPAL BOUNDARY LINE
	STATE LINE
	SHEET MATCH LINE
	STREAM OR RIVER
	LOT LINE/WATER BOUNDARY
	BLOCK NUMBER
	LOT NUMBER
	SCALED DIMENSION WHERE INDICATED
	DIM. TO ROAD CENTER LINE WHERE INDICATED
	PROPERTY LINE WHERE INDICATED

THIS SHEET WAS FORMALLY CERTIFIED ON 12/01/05, SIGNED BY SANTO DIDONATO, C.T.A. AND ASSIGNED SERIAL NUMBER 870

TAX MAP
BOROUGH OF STOCKTON
 HUNTERDON COUNTY, NEW JERSEY
 SCALE: 1"=100' NOVEMBER 2005
DONALD H. KAMP
 N.J. PROFESSIONAL LAND SURVEYOR NO. 26953
 HOPEWELL VALLEY ENGINEERING, PC
 73 ROUTE 31 N, PENNINGTON, NJ 08534
 TO SHOW CONDITIONS AS OF 02/13/2020

SHEET 2



REVISIONS		
DATE	NAME	LICENSE NO.
02/13/20	STEVEN D. PARENT, P.L.S.	240503626900
01/25/19	STEVEN D. PARENT, P.L.S.	240503626900
12/12/17	STEVEN D. PARENT, P.L.S.	240503626900
11/23/16	STEVEN D. PARENT, P.L.S.	240503626900
12/14/15	STEVEN D. PARENT, P.L.S.	240503626900
11/18/14	GLENN A. ROBINSON, P.L.S.	34490
07/10/14	GLENN A. ROBINSON, P.L.S.	34490
03/28/13	GLENN A. ROBINSON, P.L.S.	34490
12/15/11	GLENN A. ROBINSON, P.L.S.	34490
10/31/10	DONALD H. KAMP, P.L.S.	26593
10/31/09	DONALD H. KAMP, P.L.S.	26593
10/31/08	DONALD H. KAMP, P.L.S.	26593
10/31/07	DONALD H. KAMP, P.L.S.	26593
12/01/06	DONALD H. KAMP, P.L.S.	26593

THIS SHEET HAS BEEN REDRAWN USING COMPUTER AIDED DRAFTING/DESIGN (CAD/D) BASED ON THE MAP ORIGINALLY PREPARED BY FRANK W. BOHREN, C.E. DATED JUNE, 1962.

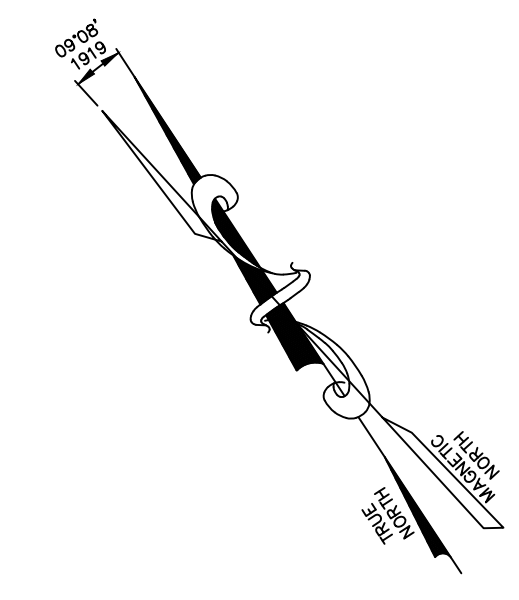
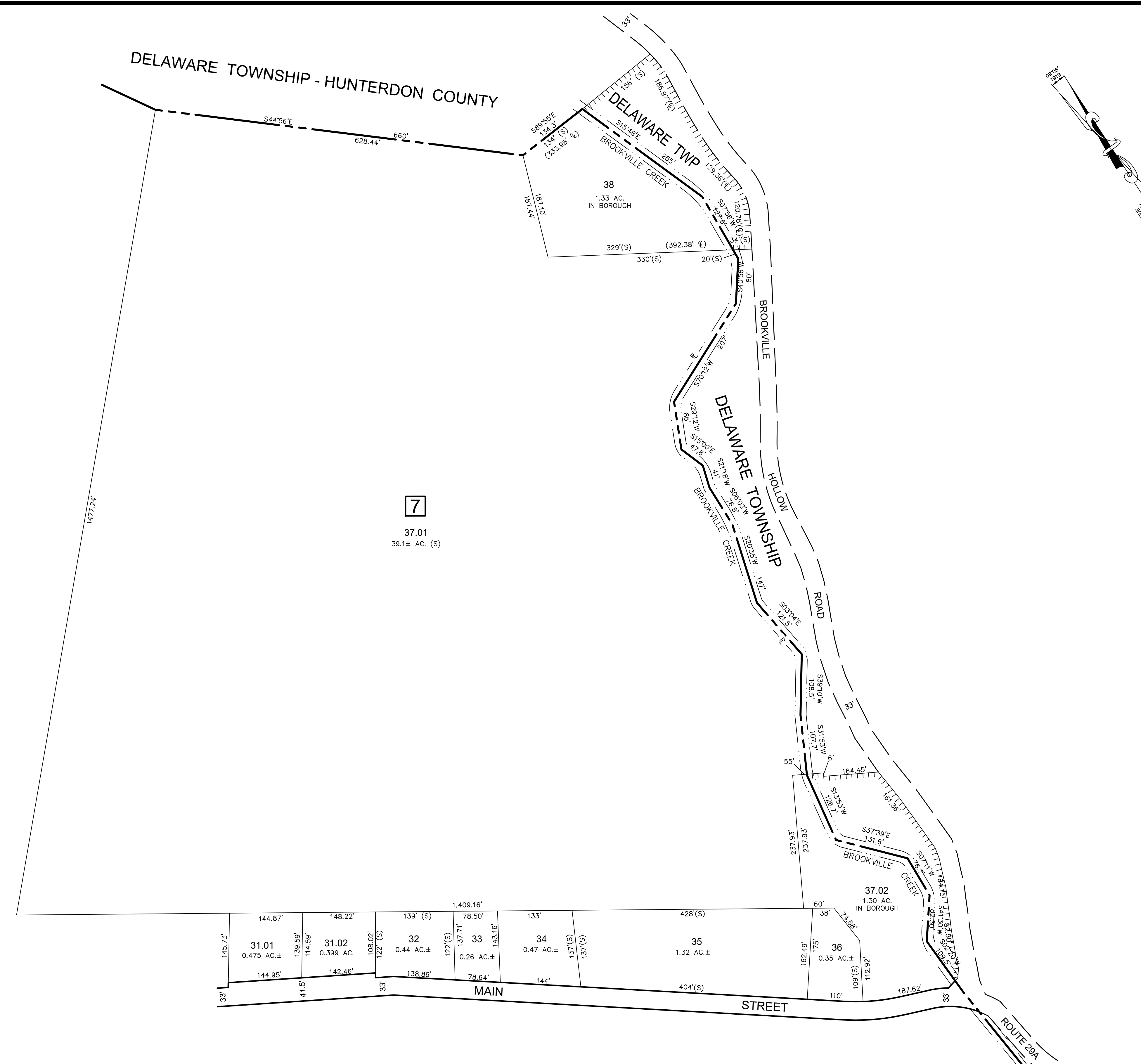
LEGEND	
	MUNICIPAL BOUNDARY LINE
	STATE LINE
	SHEET MATCH LINE
	STREAM OR RIVER
	LOT LINE/WATER BOUNDARY
	BLOCK NUMBER
	LOT NUMBER
	SCALED DIMENSION WHERE INDICATED
	DEED DIM. TO ROAD CENTER LINE WHERE INDICATED
	PROPERTY LINE WHERE INDICATED

THIS SHEET WAS FORMALLY CERTIFIED ON 12/01/05, SIGNED BY SANTO DIDONATO, C.T.A. AND ASSIGNED SERIAL NUMBER 870

TAX MAP
BOROUGH OF STOCKTON
 HUNTERDON COUNTY, NEW JERSEY
 SCALE: 1"=100'
 NOVEMBER 2005
DONALD H. KAMP
 N.J. PROFESSIONAL LAND SURVEYOR NO. 26953
 HOPEWELL VALLEY ENGINEERING, PC
 73 ROUTE 31 N, PENNINGTON, NJ 08534
 TO SHOW CONDITIONS AS OF 02/13/2020

SHEET 2

SHEET 3



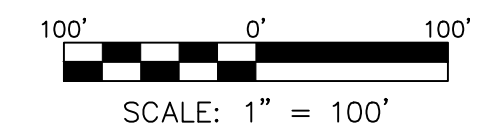
LEGEND

	MUNICIPAL BOUNDARY LINE		BLOCK NUMBER
	STATE LINE		LOT NUMBER
	SHEET MATCH LINE		SCALED DIMENSION WHERE INDICATED
	STREAM OR RIVER		DIM. TO ROAD CENTER LINE WHERE INDICATED
	LOT LINE/WATER BOUNDARY		PROPERTY LINE WHERE INDICATED

REVISIONS		
DATE	NAME	LICENSE NO.
02/13/20	STEVEN D. PARENT, P.L.S.	240503626900
01/25/19	STEVEN D. PARENT, P.L.S.	240503626900
12/12/17	STEVEN D. PARENT, P.L.S.	240503626900
11/23/16	STEVEN D. PARENT, P.L.S.	240503626900
12/14/15	STEVEN D. PARENT, P.L.S.	240503626900
11/18/14	GLENN A. ROBINSON, P.L.S.	34490
07/10/14	GLENN A. ROBINSON, P.L.S.	34490
03/08/13	GLENN A. ROBINSON, P.L.S.	34490
12/15/11	GLENN A. ROBINSON, P.L.S.	34490
10/31/10	DONALD H. KAMP, P.L.S.	26593
10/31/09	DONALD H. KAMP, P.L.S.	26593
10/31/08	DONALD H. KAMP, P.L.S.	26593
10/31/07	DONALD H. KAMP, P.L.S.	26593
12/01/06	DONALD H. KAMP, P.L.S.	26593

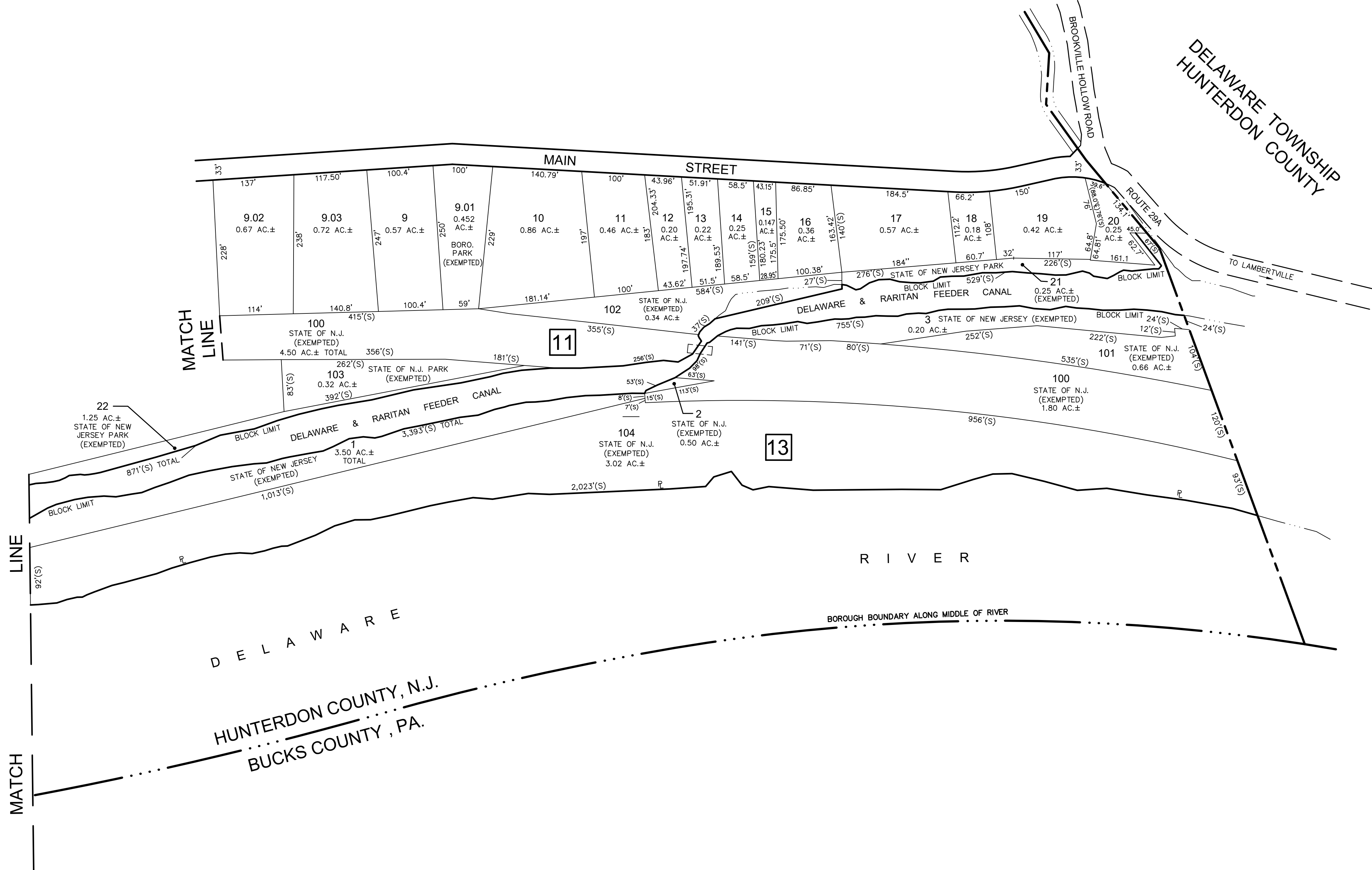
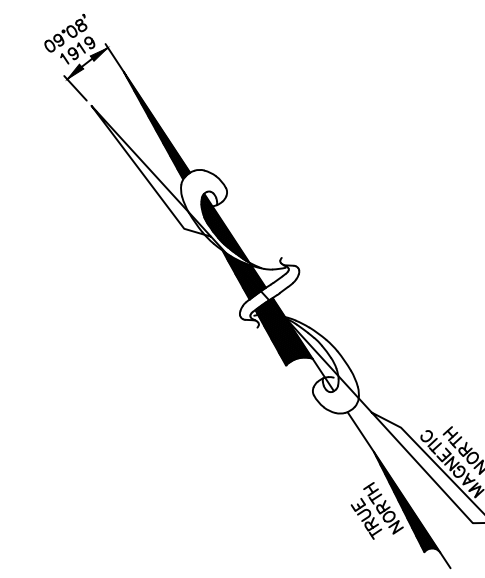
THIS SHEET HAS BEEN REDRAWN USING COMPUTER AIDED DRAFTING/DESIGN (CAD/D) BASED ON THE MAP ORIGINALLY PREPARED BY FRANK W. BOHREN, C.E. DATED JUNE, 1962.

SHEET 4.01



THIS SHEET WAS FORMALLY CERTIFIED ON 12/01/05, SIGNED BY SANTO DIDONATO, C.T.A. AND ASSIGNED SERIAL NUMBER 870

TAX MAP
BOROUGH OF STOCKTON
 HUNTERDON COUNTY, NEW JERSEY
 SCALE: 1"=100' NOVEMBER 2005
DONALD H. KAMP
 N.J. PROFESSIONAL LAND SURVEYOR NO. 26953
 HOPEWELL VALLEY ENGINEERING, PC
 73 ROUTE 31 N, PENNINGTON, NJ 08534
 TO SHOW CONDITIONS AS OF 02/13/2020



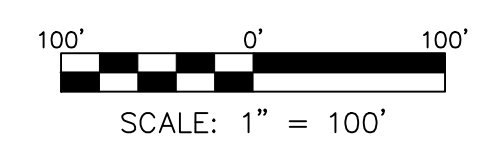
SHEET 3

LEGEND

- MUNICIPAL BOUNDARY LINE
- STATE LINE
- SHEET MATCH LINE
- STREAM OR RIVER
- LOT LINE/WATER BOUNDARY
- [5] BLOCK NUMBER
- 5 LOT NUMBER
- (S) SCALED DIMENSION WHERE INDICATED
- (C) DIM. TO ROAD CENTER LINE WHERE INDICATED
- R PROPERTY LINE WHERE INDICATED

REVISIONS		
DATE	NAME	LICENSE NO.
02/13/20	STEVEN D. PARENT, P.L.S.	240503626900
01/25/19	STEVEN D. PARENT, P.L.S.	240503626900
12/12/17	STEVEN D. PARENT, P.L.S.	240503626900
11/23/16	STEVEN D. PARENT, P.L.S.	240503626900
12/14/15	STEVEN D. PARENT, P.L.S.	240503626900
11/18/14	GLENN A. ROBINSON, P.L.S.	34490
07/10/14	GLENN A. ROBINSON, P.L.S.	34490
03/08/13	GLENN A. ROBINSON, P.L.S.	34490
12/15/11	GLENN A. ROBINSON, P.L.S.	34490
10/31/10	DONALD H. KAMP, P.L.S.	26593
10/31/09	DONALD H. KAMP, P.L.S.	26593
10/31/08	DONALD H. KAMP, P.L.S.	26593
10/31/07	DONALD H. KAMP, P.L.S.	26593
12/01/05	DONALD H. KAMP, P.L.S.	26593

THIS SHEET HAS BEEN REDRAWN USING COMPUTER AIDED DRAFTING/DESIGN (CAD/D) BASED ON THE MAP ORIGINALLY PREPARED BY FRANK W. BOHREN, C.E. DATED JUNE, 1962.



THIS SHEET WAS FORMALLY CERTIFIED ON 12/01/05, SIGNED BY SANTO DIDONATO, C.T.A. AND ASSIGNED SERIAL NUMBER 870

TAX MAP
BOROUGH OF STOCKTON
 HUNTERDON COUNTY, NEW JERSEY
 SCALE: 1"=100' NOVEMBER 2005
DONALD H. KAMP
 N.J. PROFESSIONAL LAND SURVEYOR NO. 26953
 HOPEWELL VALLEY ENGINEERING, PC
 73 ROUTE 31 N, PENNINGTON, NJ 08534
 TO SHOW CONDITIONS AS OF 02/13/2020